

PRODUCT FACT SHEET



Product Name	synchrony Semi-Finished FLAT-TOP Bifocal 76 x 28mm 1.5 Photochromic
---------------------	---

1. Customer Product Codes

CAT Code:	LGC:	LGC Description:	Notes:	FDA:
	L6156	SYNC SF B FT28 15 PH GRY UNC ---	Country of Origin required on Label	US FDA disclaimer Required
	L6157	SYNC SF B FT28 15 PH BRN UNC ---		
F25	L6158	SYNC SF B FT28 15 PH GRY HC B--		
F26	L6159	SYNC SF B FT28 15 PH BRN HC B--		

2. Product Range:

Nominal Diameter (mm)	Nominal Base Curve (D)	Add Power Range (D)	Rx Range Recommended (D)
76	0.50	1.00 to 3.00	-9.00 to -6.00
76	2.25	1.00 to 3.00	-5.75 to -3.75
76	4.25	1.00 to 3.00	-3.50 to -1.50
76	5.25	1.00 to 3.00	-1.25 to +1.25
76	6.25	1.00 to 3.00	+1.50 to +2.25
76	8.25	1.00 to 3.00	+2.50 to +5.00

3. Material & Coating Specifications:

Type	1.5 Photochromic
Refractive Index	$n_d = 1.502$ $n_e = 1.504$
Abbe Number	$v_d = 54$ $v_e = 52$
Density	1.18 g/cm ³
Luminous Transmittance (clear state)	≥ 87%
UV Protection (ISO)	Coated, Activated : 2.0 mm Centre Thickness: UVA : 100 %, UVB : 100 %
Coating Type	Hard Coated & Uncoated

4. Lens Geometry: Curves measured in 1.530 Index, at the Geometric Centre

Nominal Base	True Front Curve (D)	Radii (mm)	Nominal Back Curve (D)	Centre Thickness (± 1.0mm)	Nominal Edge Thickness (mm)
0.50	0.37	1432.43	-4.00	10.6	15.8
2.25	2.09	253.59	-4.00	10.6	13.6
4.25	4.30	123.26	-4.00	10.6	10.4
5.25	5.26	100.76	-6.00	8.7	10.2
6.25	6.21	85.35	-6.00	8.7	8.8
8.25	8.26	64.16	-6.00	12.3	9.0

Document Number: 00216.FS2	Reviewed by: Geoff Riley, 26 Aug 2016
For External Distribution	Page 1 of 3

PRODUCT FACT SHEET

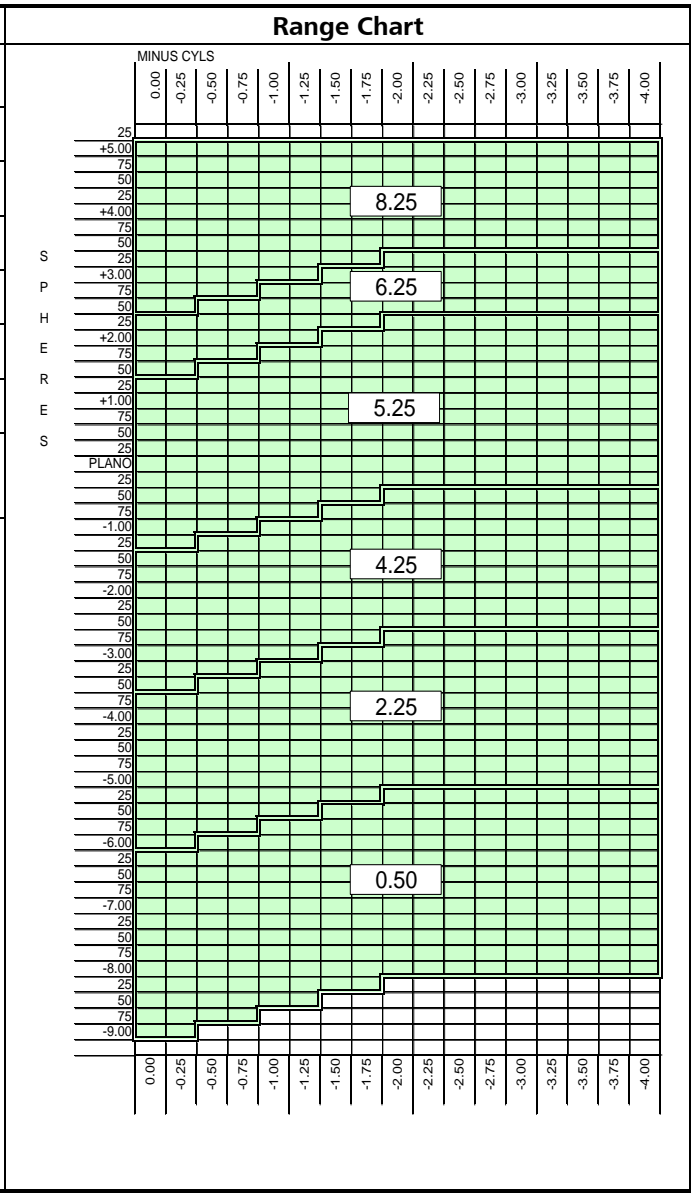
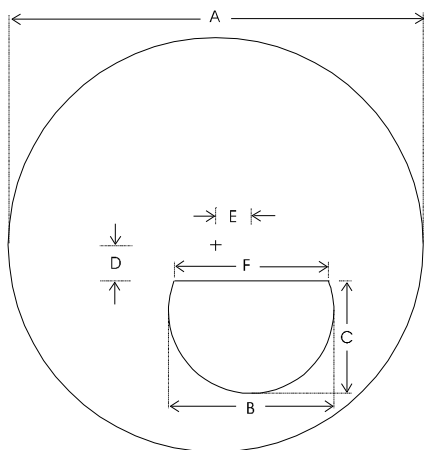


Product Name

synchrony Semi-Finished FLAT-TOP Bifocal 76 x 28mm 1.5 Photochromic

Lens Geometry (continued)		
Code	Dimension	Value (mm)
A	Lens Diameter	76.0
B	Seg Diameter	28.0
C	Seg Depth	19.0
D	Distance Below Datum	6.0
E	Inset From Datum	6.0
F *	Seg Line Length	26

* Seg dimensions vary slightly as a function of add power. Nominal value only shown.



5. Surfacing: Recommended centre & edge thicknesses for all regions:

Power Range (D)	USA Market Minimum Centre Thickness	Int'l Market Minimum Centre Thickness (mm)	All Markets Minimum Edge Thickness (mm)
High Minus to -2.00	2.0	2.0	
-1.75 to +2.00	2.0 or *	2.0 or *	1.5 *
+2.25 to High Pus			1.5

* Thicknesses are based on whichever is the limiting factor

Document Number: 00216.FS2
For External Distribution

Reviewed by: Geoff Riley, 26 Aug 2016
Page 2 of 3

PRODUCT FACT SHEET



Product Name	synchrony Semi-Finished FLAT-TOP Bifocal 76 x 28mm 1.5 Photochromic
---------------------	---

6. Product Markings: Samples

Permanent Markings – Front Surface	Permanent Markings – Back Surface
<p>625-100R XXXX</p>	<p>19326 425-200 R FT 28 H-PF</p>

Document Number: 00216.FS2	Reviewed by: Geoff Riley, 26 Aug 2016
For External Distribution	Page 3 of 3